

CAMDEN COUNTY M.E.A.
1645 Ferry Avenue
Camden, NJ 08104

PUBLIC SERVICE ELECTRIC & GAS
PO Box 790
Camden, NJ 07104-0790

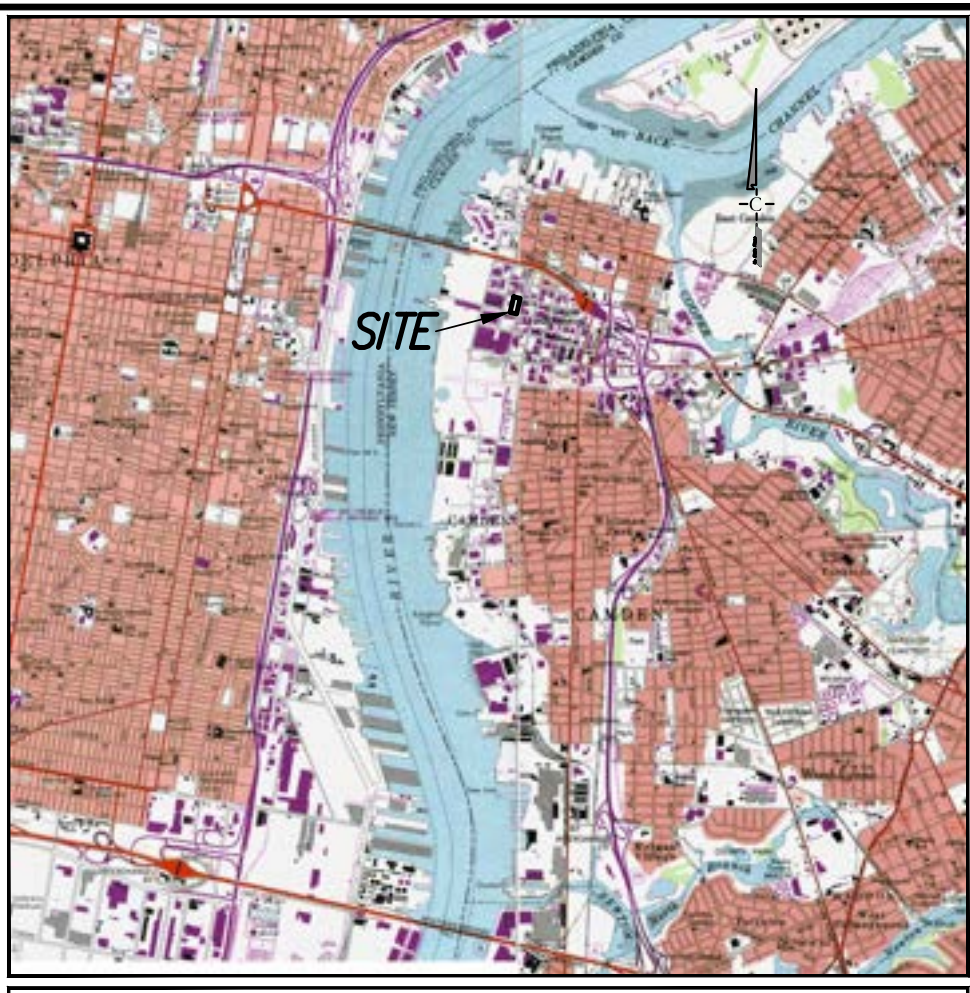
VERIZON
540 Broad Street
Newark, NJ 07101

AMERICAN WATER
PO Box 52747
Phenix, AZ 85072

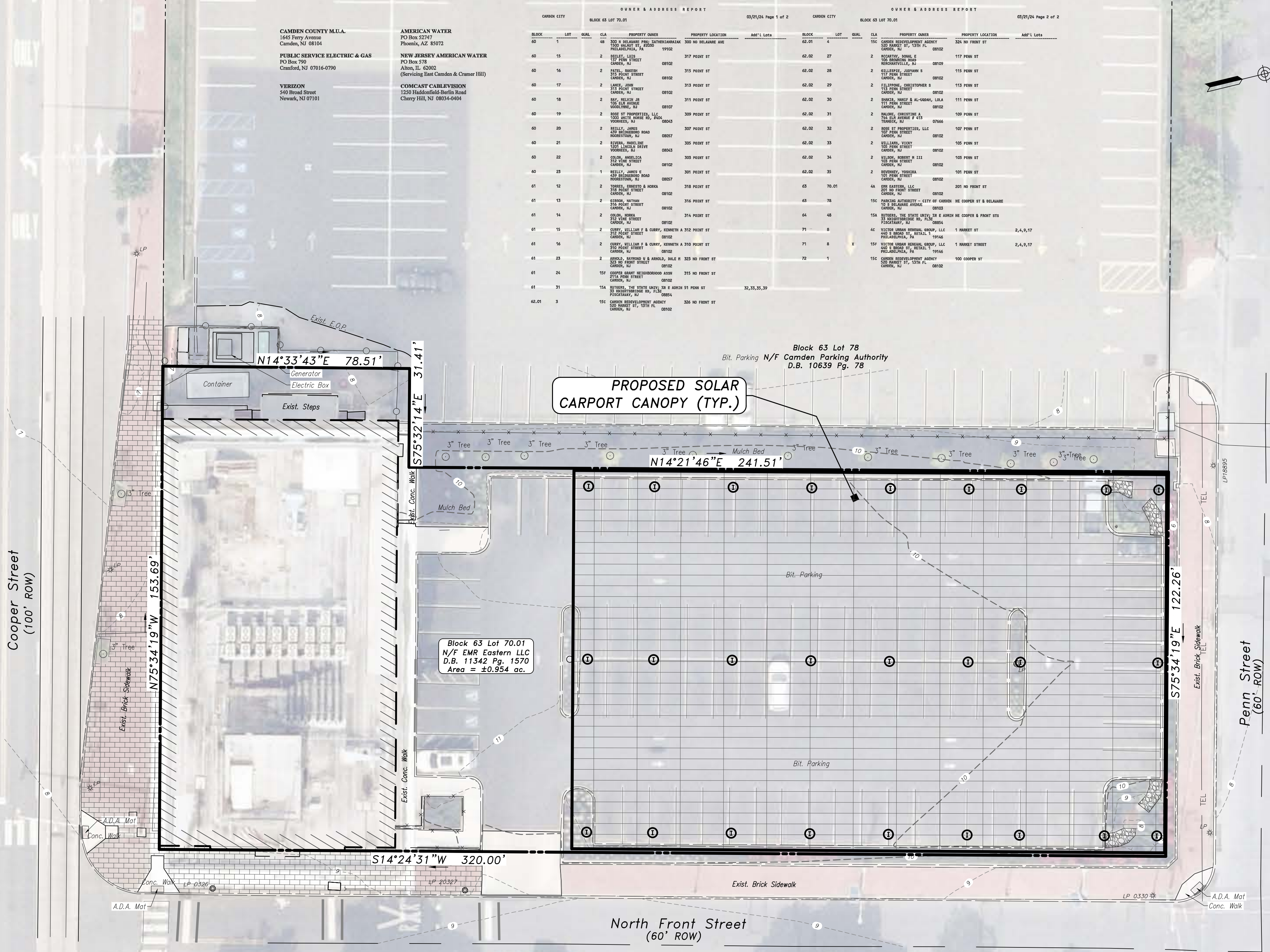
NEW JERSEY AMERICAN WATER
PO Box 578
Albany, NJ 02002
(Serving East Camden & Cresser Hill)

COMCAST CABLEVISION
1225 Wallingford/Suffin Road
Cherry Hill, NJ 08034-0404

CAMDEN CITY	BLOCK 63 LOT 70.01	OWNER & ADDRESS REPORT	03/25/24 Page 1 of 2	CAMDEN CITY	BLOCK 63 LOT 70.01	OWNER & ADDRESS REPORT	03/25/24 Page 2 of 2
00	1	300 N BELLEVUE AVE PHILADELPHIA, PA 19102	300 NO BELLEVUE AVE PHILADELPHIA, PA 19102	02	01	CAMDEN RECREATION AGENCY 225 N 1ST ST CAMDEN, NJ 08102	225 NO FRONT ST CAMDEN, NJ 08102
00	15	217 BELLEVUE AVE PHILADELPHIA, PA 19102	217 BELLEVUE AVE PHILADELPHIA, PA 19102	02	02	WYCHITSA DRIVE E CAMDEN, NJ 08102	117 PENN ST CAMDEN, NJ 08102
00	16	215 BELLEVUE AVE PHILADELPHIA, PA 19102	215 BELLEVUE AVE PHILADELPHIA, PA 19102	02	03	215 BELLEVUE AVE CAMDEN, NJ 08102	113 PENN ST CAMDEN, NJ 08102
00	17	213 BELLEVUE AVE PHILADELPHIA, PA 19102	213 BELLEVUE AVE PHILADELPHIA, PA 19102	02	04	213 BELLEVUE AVE CAMDEN, NJ 08102	113 PENN ST CAMDEN, NJ 08102
00	18	211 BELLEVUE AVE PHILADELPHIA, PA 19102	211 BELLEVUE AVE PHILADELPHIA, PA 19102	02	05	211 BELLEVUE AVE CAMDEN, NJ 08102	113 PENN ST CAMDEN, NJ 08102
00	19	209 BELLEVUE AVE PHILADELPHIA, PA 19102	209 BELLEVUE AVE PHILADELPHIA, PA 19102	02	06	209 BELLEVUE AVE CAMDEN, NJ 08102	113 PENN ST CAMDEN, NJ 08102
00	20	207 BELLEVUE AVE PHILADELPHIA, PA 19102	207 BELLEVUE AVE PHILADELPHIA, PA 19102	02	07	207 BELLEVUE AVE CAMDEN, NJ 08102	113 PENN ST CAMDEN, NJ 08102
00	21	205 BELLEVUE AVE PHILADELPHIA, PA 19102	205 BELLEVUE AVE PHILADELPHIA, PA 19102	02	08	205 BELLEVUE AVE CAMDEN, NJ 08102	113 PENN ST CAMDEN, NJ 08102
00	22	203 BELLEVUE AVE PHILADELPHIA, PA 19102	203 BELLEVUE AVE PHILADELPHIA, PA 19102	02	09	203 BELLEVUE AVE CAMDEN, NJ 08102	113 PENN ST CAMDEN, NJ 08102
00	23	201 BELLEVUE AVE PHILADELPHIA, PA 19102	201 BELLEVUE AVE PHILADELPHIA, PA 19102	02	10	201 BELLEVUE AVE CAMDEN, NJ 08102	113 PENN ST CAMDEN, NJ 08102
01	12	318 BELLEVUE AVE PHILADELPHIA, PA 19102	318 BELLEVUE AVE PHILADELPHIA, PA 19102	03	10	318 BELLEVUE AVE CAMDEN, NJ 08102	301 NO FRONT ST CAMDEN, NJ 08102
01	13	316 BELLEVUE AVE PHILADELPHIA, PA 19102	316 BELLEVUE AVE PHILADELPHIA, PA 19102	03	16	316 BELLEVUE AVE CAMDEN, NJ 08102	301 NO FRONT ST CAMDEN, NJ 08102
01	14	314 BELLEVUE AVE PHILADELPHIA, PA 19102	314 BELLEVUE AVE PHILADELPHIA, PA 19102	04	46	314 BELLEVUE AVE CAMDEN, NJ 08102	301 NO FRONT ST CAMDEN, NJ 08102
01	15	312 BELLEVUE AVE PHILADELPHIA, PA 19102	312 BELLEVUE AVE PHILADELPHIA, PA 19102	04	01	312 BELLEVUE AVE CAMDEN, NJ 08102	301 NO FRONT ST CAMDEN, NJ 08102
01	16	310 BELLEVUE AVE PHILADELPHIA, PA 19102	310 BELLEVUE AVE PHILADELPHIA, PA 19102	04	02	310 BELLEVUE AVE CAMDEN, NJ 08102	301 NO FRONT ST CAMDEN, NJ 08102
01	17	308 BELLEVUE AVE PHILADELPHIA, PA 19102	308 BELLEVUE AVE PHILADELPHIA, PA 19102	04	03	308 BELLEVUE AVE CAMDEN, NJ 08102	301 NO FRONT ST CAMDEN, NJ 08102
01	18	306 BELLEVUE AVE PHILADELPHIA, PA 19102	306 BELLEVUE AVE PHILADELPHIA, PA 19102	04	04	306 BELLEVUE AVE CAMDEN, NJ 08102	301 NO FRONT ST CAMDEN, NJ 08102
01	19	304 BELLEVUE AVE PHILADELPHIA, PA 19102	304 BELLEVUE AVE PHILADELPHIA, PA 19102	04	05	304 BELLEVUE AVE CAMDEN, NJ 08102	301 NO FRONT ST CAMDEN, NJ 08102
01	20	302 BELLEVUE AVE PHILADELPHIA, PA 19102	302 BELLEVUE AVE PHILADELPHIA, PA 19102	04	06	302 BELLEVUE AVE CAMDEN, NJ 08102	301 NO FRONT ST CAMDEN, NJ 08102
01	21	300 BELLEVUE AVE PHILADELPHIA, PA 19102	300 BELLEVUE AVE PHILADELPHIA, PA 19102	04	07	300 BELLEVUE AVE CAMDEN, NJ 08102	301 NO FRONT ST CAMDEN, NJ 08102
01	22	298 BELLEVUE AVE PHILADELPHIA, PA 19102	298 BELLEVUE AVE PHILADELPHIA, PA 19102	04	08	298 BELLEVUE AVE CAMDEN, NJ 08102	301 NO FRONT ST CAMDEN, NJ 08102
01	23	296 BELLEVUE AVE PHILADELPHIA, PA 19102	296 BELLEVUE AVE PHILADELPHIA, PA 19102	04	09	296 BELLEVUE AVE CAMDEN, NJ 08102	301 NO FRONT ST CAMDEN, NJ 08102
01	24	294 BELLEVUE AVE PHILADELPHIA, PA 19102	294 BELLEVUE AVE PHILADELPHIA, PA 19102	04	10	294 BELLEVUE AVE CAMDEN, NJ 08102	301 NO FRONT ST CAMDEN, NJ 08102
01	25	292 BELLEVUE AVE PHILADELPHIA, PA 19102	292 BELLEVUE AVE PHILADELPHIA, PA 19102	04	11	292 BELLEVUE AVE CAMDEN, NJ 08102	301 NO FRONT ST CAMDEN, NJ 08102
01	26	290 BELLEVUE AVE PHILADELPHIA, PA 19102	290 BELLEVUE AVE PHILADELPHIA, PA 19102	04	12	290 BELLEVUE AVE CAMDEN, NJ 08102	301 NO FRONT ST CAMDEN, NJ 08102
01	27	288 BELLEVUE AVE PHILADELPHIA, PA 19102	288 BELLEVUE AVE PHILADELPHIA, PA 19102	04	13	288 BELLEVUE AVE CAMDEN, NJ 08102	301 NO FRONT ST CAMDEN, NJ 08102
01	28	286 BELLEVUE AVE PHILADELPHIA, PA 19102	286 BELLEVUE AVE PHILADELPHIA, PA 19102	04	14	286 BELLEVUE AVE CAMDEN, NJ 08102	301 NO FRONT ST CAMDEN, NJ 08102
01	29	284 BELLEVUE AVE PHILADELPHIA, PA 19102	284 BELLEVUE AVE PHILADELPHIA, PA 19102	04	15	284 BELLEVUE AVE CAMDEN, NJ 08102	301 NO FRONT ST CAMDEN, NJ 08102
01	30	282 BELLEVUE AVE PHILADELPHIA, PA 19102	282 BELLEVUE AVE PHILADELPHIA, PA 19102	04	16	282 BELLEVUE AVE CAMDEN, NJ 08102	301 NO FRONT ST CAMDEN, NJ 08102
01	31	280 BELLEVUE AVE PHILADELPHIA, PA 19102	280 BELLEVUE AVE PHILADELPHIA, PA 19102	04	17	280 BELLEVUE AVE CAMDEN, NJ 08102	301 NO FRONT ST CAMDEN, NJ 08102
01	32	278 BELLEVUE AVE PHILADELPHIA, PA 19102	278 BELLEVUE AVE PHILADELPHIA, PA 19102	04	18	278 BELLEVUE AVE CAMDEN, NJ 08102	301 NO FRONT ST CAMDEN, NJ 08102
01	33	276 BELLEVUE AVE PHILADELPHIA, PA 19102	276 BELLEVUE AVE PHILADELPHIA, PA 19102	04	19	276 BELLEVUE AVE CAMDEN, NJ 08102	301 NO FRONT ST CAMDEN, NJ 08102
01	34	274 BELLEVUE AVE PHILADELPHIA, PA 19102	274 BELLEVUE AVE PHILADELPHIA, PA 19102	04	20	274 BELLEVUE AVE CAMDEN, NJ 08102	301 NO FRONT ST CAMDEN, NJ 08102
01	35	272 BELLEVUE AVE PHILADELPHIA, PA 19102	272 BELLEVUE AVE PHILADELPHIA, PA 19102	04	21	272 BELLEVUE AVE CAMDEN, NJ 08102	301 NO FRONT ST CAMDEN, NJ 08102
01	36	270 BELLEVUE AVE PHILADELPHIA, PA 19102	270 BELLEVUE AVE PHILADELPHIA, PA 19102	04	22	270 BELLEVUE AVE CAMDEN, NJ 08102	301 NO FRONT ST CAMDEN, NJ 08102
01	37	268 BELLEVUE AVE PHILADELPHIA, PA 19102	268 BELLEVUE AVE PHILADELPHIA, PA 19102	04	23	268 BELLEVUE AVE CAMDEN, NJ 08102	301 NO FRONT ST CAMDEN, NJ 08102
01	38	266 BELLEVUE AVE PHILADELPHIA, PA 19102	266 BELLEVUE AVE PHILADELPHIA, PA 19102	04	24	266 BELLEVUE AVE CAMDEN, NJ 08102	301 NO FRONT ST CAMDEN, NJ 08102
01	39	264 BELLEVUE AVE PHILADELPHIA, PA 19102	264 BELLEVUE AVE PHILADELPHIA, PA 19102	04	25	264 BELLEVUE AVE CAMDEN, NJ 08102	301 NO FRONT ST CAMDEN, NJ 08102
01	40	262 BELLEVUE AVE PHILADELPHIA, PA 19102	262 BELLEVUE AVE PHILADELPHIA, PA 19102	04	26	262 BELLEVUE AVE CAMDEN, NJ 08102	301 NO FRONT ST CAMDEN, NJ 08102



LOCATION MAP
Philadelphia/Camden Quads
Not to Scale



Sheet List Table	
Sheet No.	Sheet Title
1	Cover Sheet
2	Site Plan
3	Details



- GENERAL NOTES:
- PROPERTY LINES, TOPOGRAPHY AND EASEMENTS (IF ANY) SHOWN ARE BASED ON A SURVEY PERFORMED BY CHURCHILL CONSULTING ENGINEERS ON AUGUST 8TH AND 9TH, 2023.
 - THE EXISTING NUMBER OF PARKING STALLS AND DRIVE AISLES SHALL REMAIN UNCHANGED AS A RESULT OF THE PROPOSED SOLAR CANOPY IMPROVEMENTS.
 - ADEQUATE PARKING AND CIRCULATION SHALL BE MAINTAINED DURING INSTALLATION OF THE SOLAR CANOPIES.
 - THE CONTRACTOR SHALL WORK WITH THE APPROPRIATE DEPARTMENT DURING CONSTRUCTION TO PROVIDE A STAGING AREA FOR VEHICLES AND MATERIALS, WHILE MAINTAINING A SAFE CONSTRUCTION SITE.
 - CONTRACTOR TO VERIFY ALL HORIZONTAL AND VERTICAL UTILITY LOCATIONS PRIOR TO CONSTRUCTION.
 - IN ACCORDANCE WITH SENATE BILL 921 APPROVED ON APRIL 22, 2010 - "...THE SOLAR PANELS SHALL NOT BE INCLUDED IN THE CALCULATION OF PROPOSED IMPERVIOUS COVERAGE AT THE SITE..." EXCLUDED ARE FOUNDATIONS AND MOUNTING STRUCTURES. HOWEVER THE PROPOSED COLUMN LOCATIONS WILL REPLACE CURRENT IMPERVIOUS SURFACES.

APPROVED BY:

PLANNING BOARD CHAIRMAN _____ DATE _____

PLANNING BOARD SECRETARY _____ DATE _____

PLANNING BOARD ENGINEER _____ DATE _____

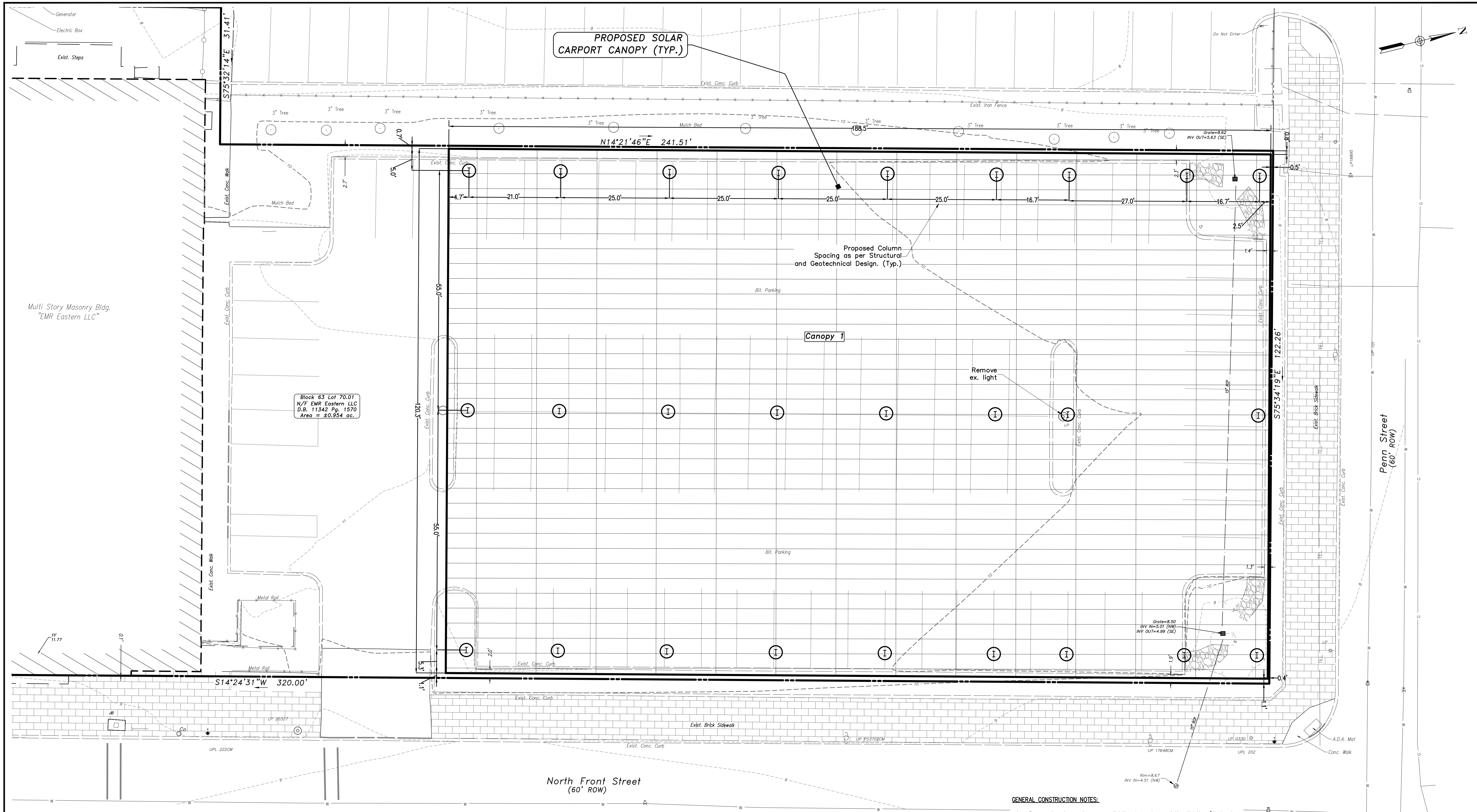
No.	DATE	DESCRIPTION	BY
1	03/25/24	Added 200' property owner list	AEC


ANDREW E. COURSEN
 NEW JERSEY PROFESSIONAL ENGINEER & LAND SURVEYOR LICENSE NO. 37183

 **CHURCHILL**
 Churchill Consulting Engineers
 344 North Route 73, Suite A, Berlin, NJ 08009
 856-767-6901

COVER SHEET
NATIONAL ENERGY PARTNERS, LLC
EASTERN METAL RECYCLING
 BLOCK 63, LOT 70.01
 201 NORTH FRONT STREET

Drawn: _____ Engineer
 Checked: _____ Date: 8/22/23
 Scale: 1" = 20'
 Project: AC23009-DS03
 Sheet: 1 of 3



No.	DATE	DESCRIPTION	BY
1	03/25/24	Updated Note #4 for sidewalk repair, if needed	AEC

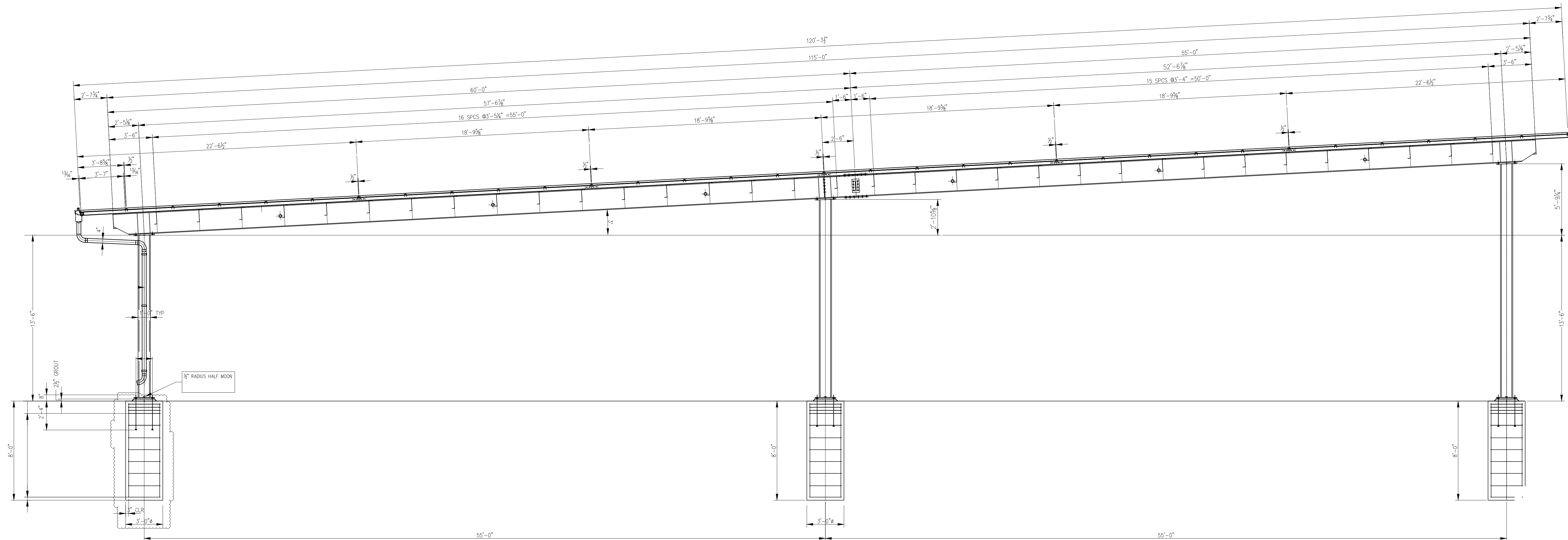
A.E.C.
ANDREW E. COURSEN
 NEW JERSEY PROFESSIONAL ENGINEER & LAND SURVEYOR LICENSE NO. 37183

CHURCHILL
 Churchill Consulting Engineers
 344 North Route 73, Suite A, Berlin, NJ 08009
 856-767-6901

SITE PLAN
NATIONAL ENERGY PARTNERS, LLC
EASTERN METAL RECYCLING
 BLOCK 63, LOT 70.01
 201 NORTH FRONT STREET

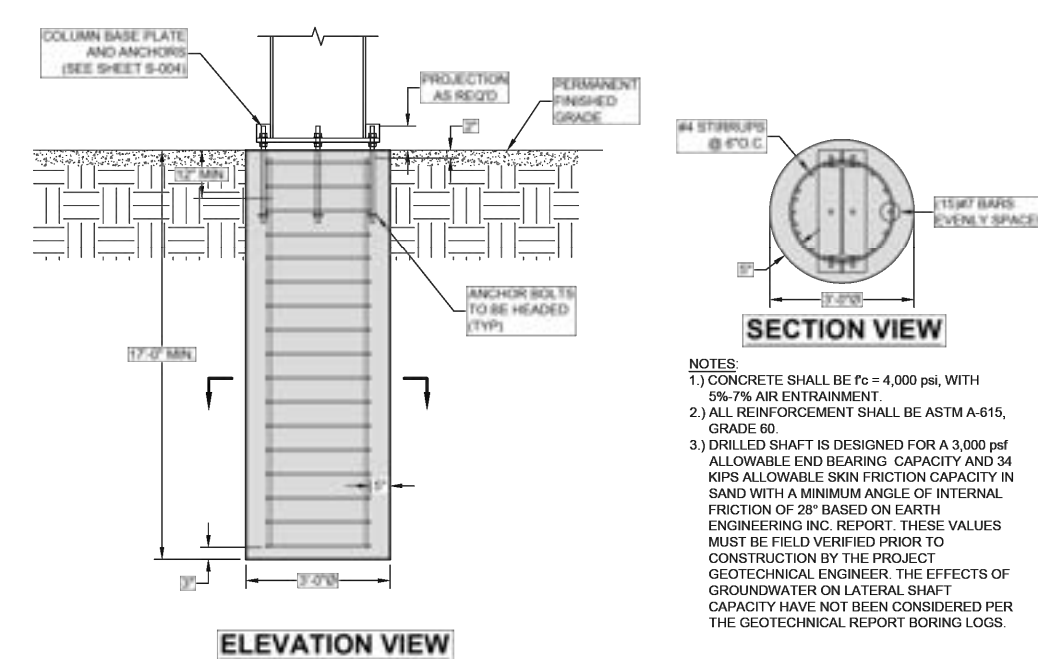
Drawn:	Engineer
Checked:	Date: 8/22/23
Scale:	1" = 10'
Project:	AC23009-DS03
Sheet:	2 of 3





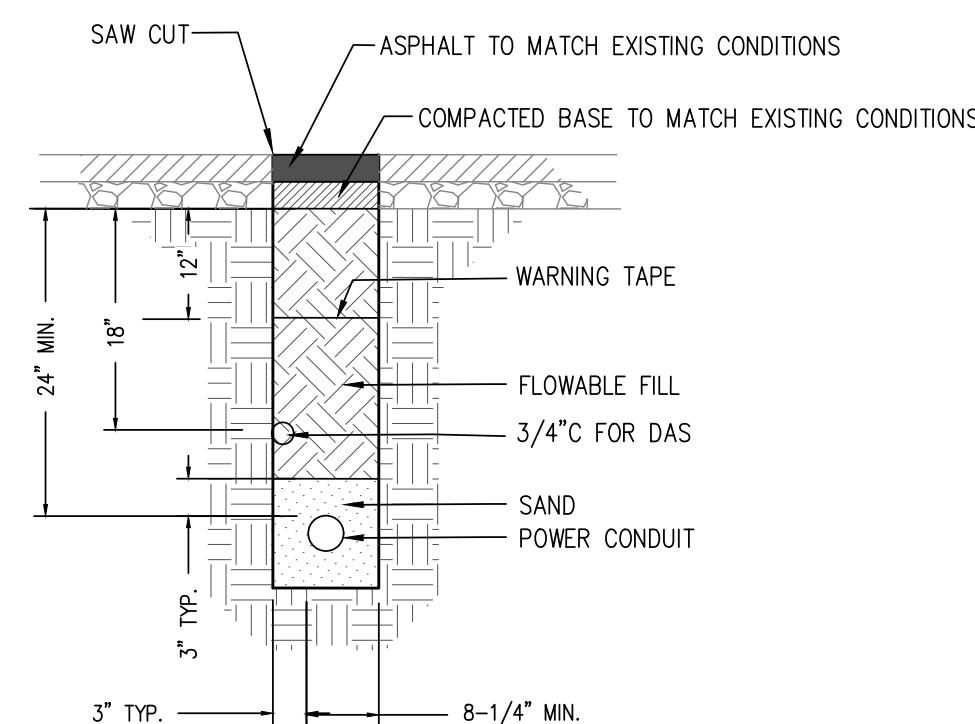
NOTE: Illustrative purposes only. Please refer to approved structural plans (by others) for detailed dimensions.

Typical Canopy Section
NO SCALE



NOTE: Typical footing detail is subject to structural design and geotechnical investigation. Subject to change.

Footings Detail
NO SCALE



Trench Repair Detail
NO SCALE



Know what's below.
Call before you dig.

No.	DATE	DESCRIPTION	BY

Andrew E. Coursen
ANDREW E. COURSEN
 NEW JERSEY PROFESSIONAL ENGINEER & LAND SURVEYOR LICENSE NO. 37183

CHURCHILL
 Churchill Consulting Engineers
 344 North Route 73, Suite A, Berlin, NJ 08009
 856-767-6901

DETAILS
NATIONAL ENERGY PARTNERS, LLC
EASTERN METAL RECYCLING
 BLOCK 63, LOT 70.01
 201 NORTH FRONT STREET

Drawn:	Engineer
Checked:	Date: 8/22/23
Scale:	1" = 10'
Project:	AC23009-DS03
Sheet:	3 of 3